

FIBER2SDI

BOX

User Manual

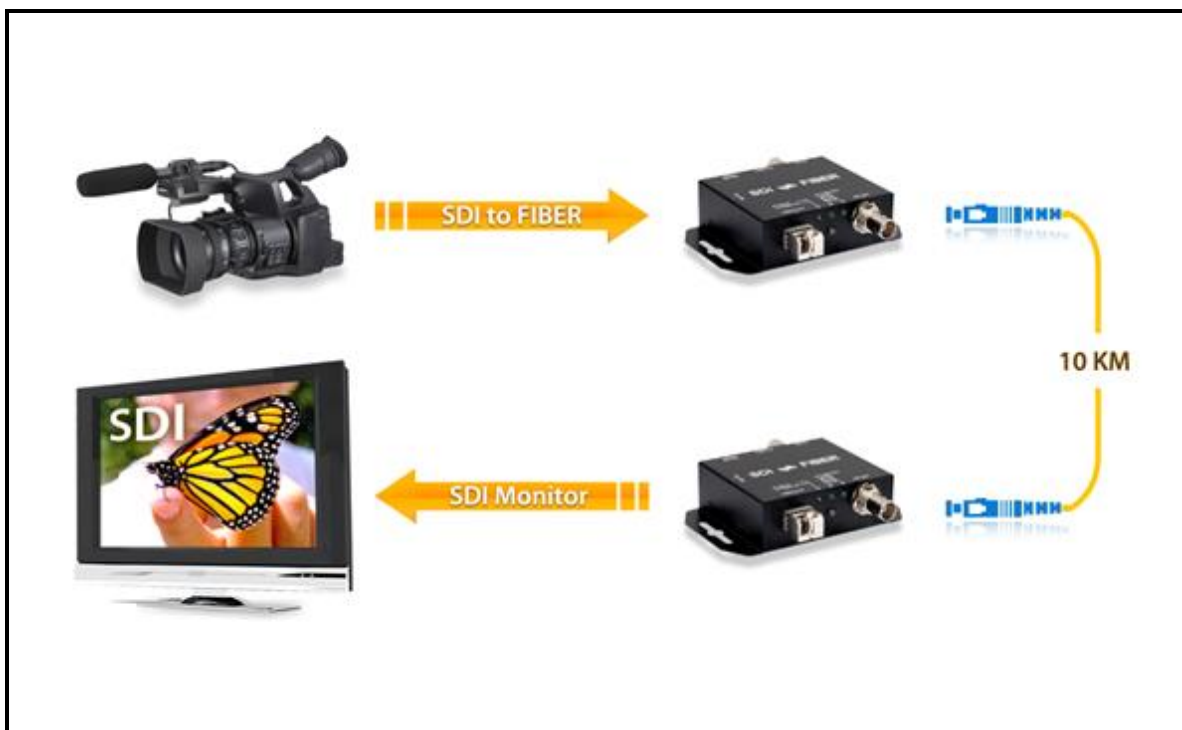


Content

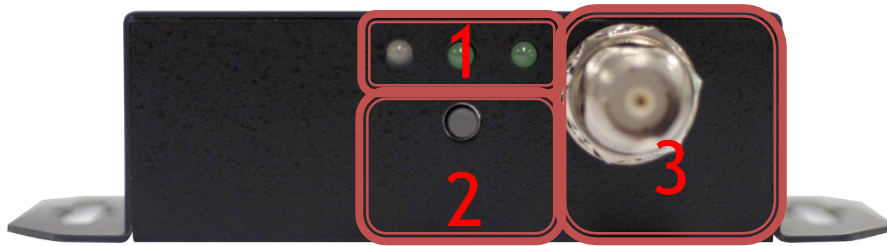
Feature	3
Front Panel	4
Rear Panel	4
Side Panel	5
SFP Connector	6
Button/LED Indicate	7
Installation.....	7
Package Contents	8
Specifications	9
Firmware Upload.....	10
Update List	12

Feature

- SDI Supports HD formats :
 - 720p50 & 60
 - 1080i50 & 60
 - 1080p24, 25, 30, 50 & 60
- SDI Support 525i & 625i SD D1 format
- Auto 3G/HD/SD-SDI detection
- Cable equalization to ensure signal integrity.
- Auto Re-clocking at 270Mbps, 1.485Gbps, 2.97Gbps
- Firmware is upgradable in the field using the integrated USB port
- The converter is Plug-and-Play
- Long transmission capability up to 10Km
- Pluggable fiber SFP design, LC connector

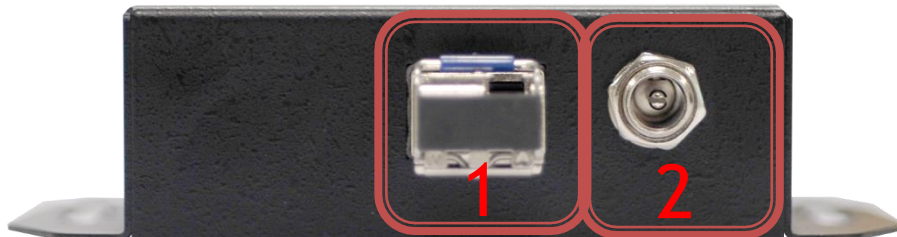


Front Panel



NO	Component	Function
1	LEDs indicate	The LEDs is indicate Output Format (SD/HD/3G)
2	Input Source	Select Input Source
3	SDI Output Port	Form your SDI Display Device plug into this port

Rear Panel



NO	Component	Function
1	Fiber Input Port	From your Fiber Cable plug into these ports
2	Power Jack	The Power adapter plug into here.

Side Panel



NO	Component	Function
1	Usb port	Upgrade firmware

SFP Connector

1. TX



XXX-XX-XXXX-T0

It is indicate the trasmitter SFP

2. RX



XXX-XX-XXXX-R0



It is indicate the Reciver SFP

3. SPF Installation Diagram:







Button/LED Indicate

1. Input Source Select.

LED Indicate	Function
	SDI Un-Locked
	SDI Locked

2. Input Format LED Indicate

LED Indicate	Function
	NO SIGNAL
	SD
	HD
	3G

Installation

SDI2FIBER installation consists of the following:

1. Disconnect +12DC adaptor to converter.
2. Connect Video Source (SDI/Optic Fiber) to the SDI/Fiber Connector.
3. Connect SDI Equipment or Fiber Cable to the BNCs connector/LC connector
4. Connect the +12DC adaptor to the converter.

Package Contents

The SDI2FIBER package contains the following items:

- User Manual x 1
- +12 DC Adapter x 1
- SDI2FIBER Converter x 1
- SFP(TX and RX) x 1

Specifications

DESCRIPTION	
SDI Format	SD-SDI, HD-SDI & 3G-SDI
SDI Transition Rate	2.970Gb/s, 1.485Gb/s and 270Mb/s
Coaxial Cable Type	RG6/RG59 (75Ω)
Cable Equalization	3G: 120m of RG6/ 100m of RG59 HD: 200m of RG6/ 140m of RG59 SD: 400m of RG6/ 280m of RG59 *1 RG6: CANARE L-5CFB Cable / RG59: Belden 9275 Cable *2 Cable Length Performance: Depending on SDI Signal and Cable Quality
Firmware Updates	Via Mini-USB
Input	1 x Fiber
Output	1 x BNC [SDI]
BNC Connector	3G 75 Ω inter-locked socket
LC Connector	--
USB Connector	Mini-USB
Bottom	Input Source
Housing	SECC
Dimension	L:104mm x W:63.3mm xH:26mm
Power Source	Power Adapter: AC 100 ~ 240 V/DC (+6 ~ 15 V)
Operation Temperature	0~50°C [32~114°F]
Storage Temperature	-20~+60°C

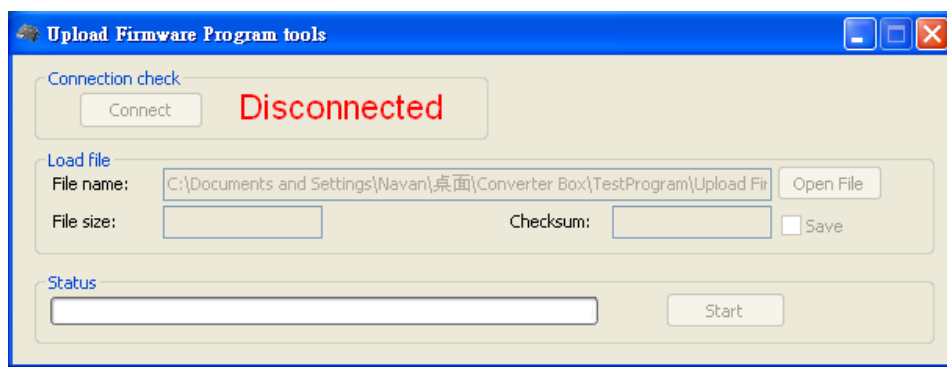
Firmware Upload

- Firmware is upgradable in the field using the integrated USB port

How to Firmware upgrade:

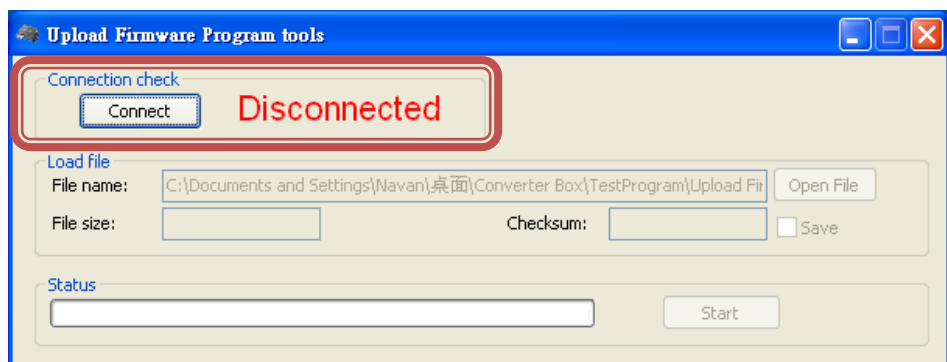
Step 1.

Open Upload Firmware Program tools.exe and connect box to PC by USB Cable.



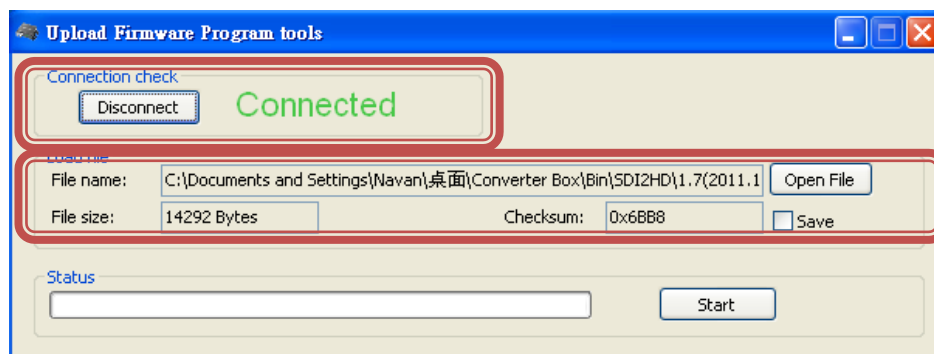
Step 2.

Plug and un-plug "DC adapter" to power on/off the converter box (the connection check status will be changed to "Connect")



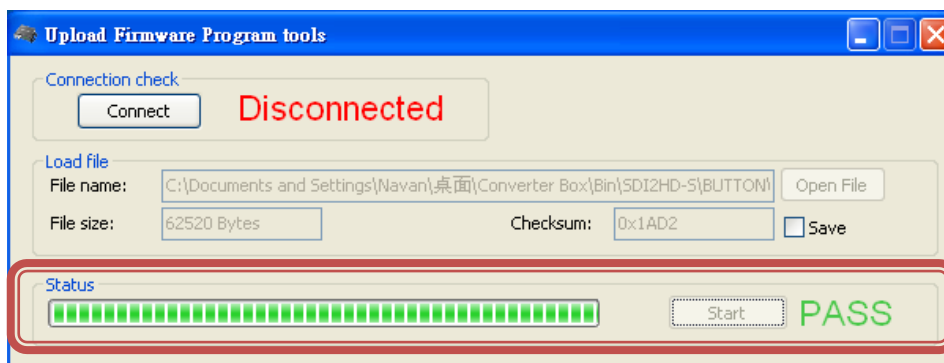
Step 3.

Plug and un-plug "DC adapter" again (the connection check status will be changed to "Connected") and Please click the Open File button to select the firmware bin file.



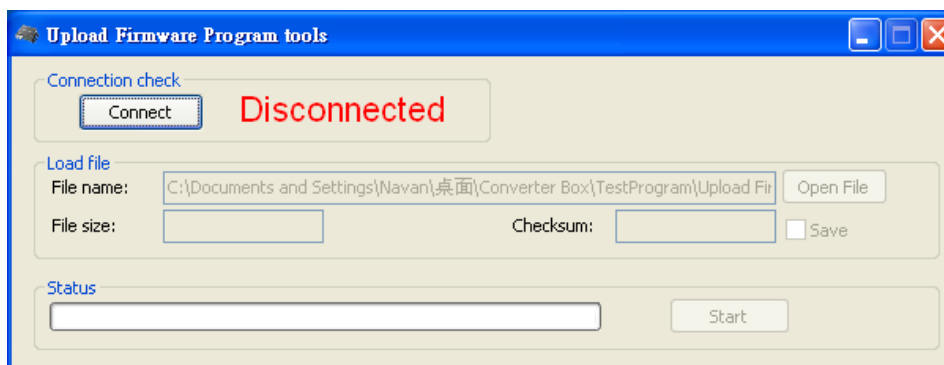
Step 4.

Please click "Start" Button to proceed with new firmware programming. The PASS message will appear when the procedures finished.



Step 5.

Close Upload Firmware Program tools



Update List

Data	Version	Command
2013.07.29	V1.0	1. Release