

SDI SPLITTER BOX

User Manual



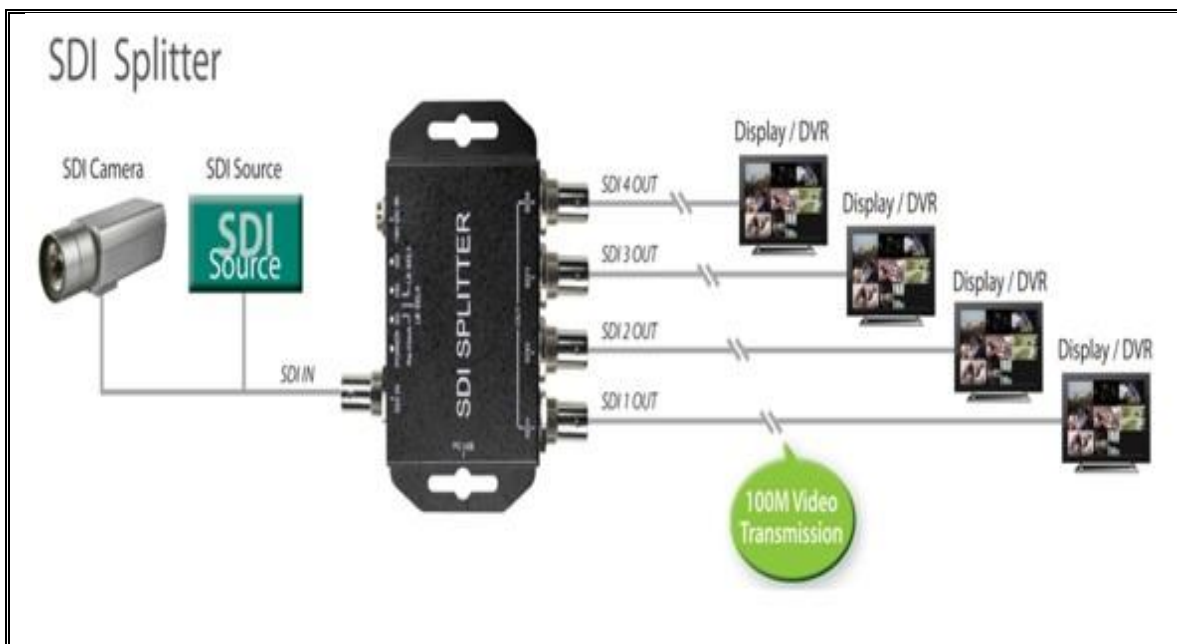
Index

Feature	3
Front Panel.....	4
Rear Panel.....	4
Dip Switch	5
Specifications	6
Firmware Upload	7
Update List.....	9

Feature

The SDI Splitter Distribution Amplifier allows a single SDI, HD-SDI or 3G-SDI video source to be distributed to (without loss of signal) four HD SDI/HDSDI/3GSDI devices at the same time.

- Easily distribute one 3G-SDI source to four 3G-SDI devices.
- Our separately buffered outputs.
- Transmitter Rate LED indication
- Lock LED indication
- Pass all ancillary data.
- Easy installation



Front Panel



NO	Component	Function
1	SDI Output Port	From your SDI Display Device plug into these ports (Pass Through)

Rear Panel



NO	Component	Function				
1	Power Jack	The Power adapter plug into here.				
2	Power/Locked LED	The LEDs is indicate Signal indicate				
3	Dipswitch	<table border="1" style="margin-left: auto; margin-right: auto;"> <tr> <td></td> <td></td> </tr> <tr> <td>Pin On (↑): Enable</td> <td>Pin OFF (↓): Disable</td> </tr> </table> <p>1.Relocker 2.LB SEL0 3.LB SEL1</p>			Pin On (↑): Enable	Pin OFF (↓): Disable
Pin On (↑): Enable	Pin OFF (↓): Disable					
4	SDI input Port	From your HDMI Source plug into these ports				

Dip Switch

- Re-clock: Receives a signal and retransmits it at a higher level and/or higher power, or onto the other side of an obstruction, so that the signal can cover longer distances.
- SB SEL0: (N/A)
- SB SEL1: (N/A)

Specifications

DESCRIPTION	
Support Video Resolution	SD – 720 x 480 i / 720 x 576 i HD– 1280 x 720 p 1920 x 1080 50i/60i 1920 x 1080 24p/30p 3G– 1920 x 1080 50p/60p 2K– 2048 x 1080 24p/30p
SDI format	SD-SDI(SMPTE 259M) HD-SDI(SMPTE 292M) 3G-SDI (SMPTE 424M / SMPTE 425M)
Audio Support	7.1ch/5.1ch/Stereo
Re-clock Function	Yes (Dip Switch)
Coaxial Cable Type	RG6/RG59(75Ω)
Cable Equalization	3G: 100m of RG6/ 86m of RG59 HD: 170m of RG6/ 120m of RG59 SD: 400m of RG6/ 280m of RG59 <i>*1 RG6: CANARE L-5CFB Cable / RG59: Belden 9275 Cable</i> <i>*2 Cable Length Performance: Depending on SDI Signal and Cable Quality</i>
Input	1 x BNC [SDI]
Output	4 x BNC [SDI]
BNC Connector	3G 75 Ω inter-locked socket
DIP Switch	3-pin [Re-clock / LED mode / NA]
Housing	SECC
Dimension	L:104mm x W:63.3mm xH:26mm
Power Source	Power Adapter: AC 100 ~ 240 V/DC (+6 ~ 15 V)
Operation Temperature	0~50°C [32~114°F]
Storage Temperature	-20~+60°C

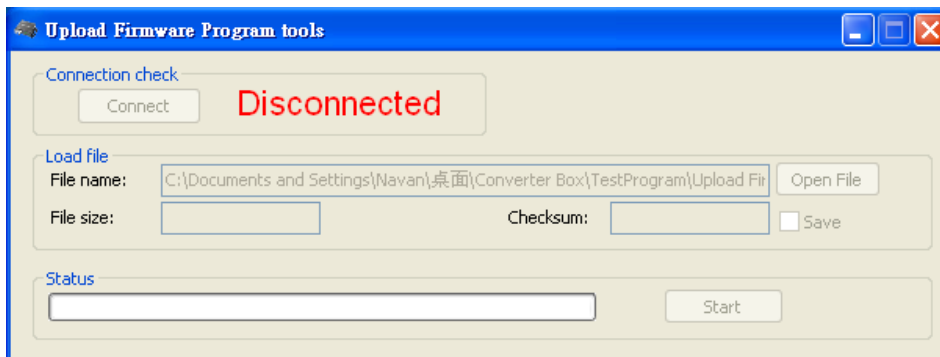
Firmware Upload

- Firmware is upgradable in the field using the integrated USB port

How to Firmware upgrade:

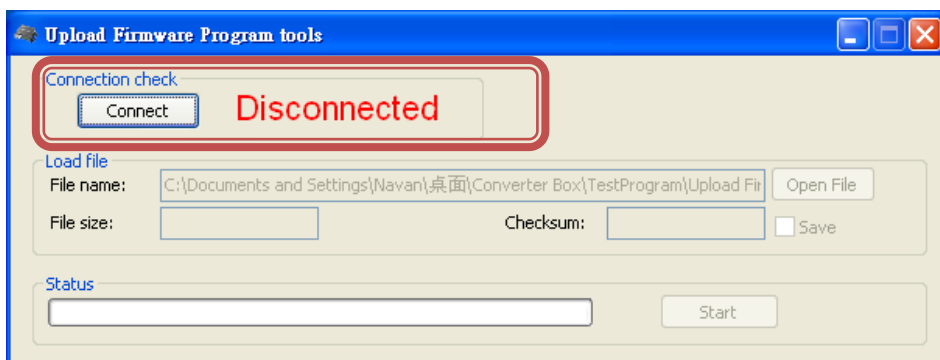
Step 1.

Open Upload Firmware Program tools.exe and connect box to PC by USB Cable.



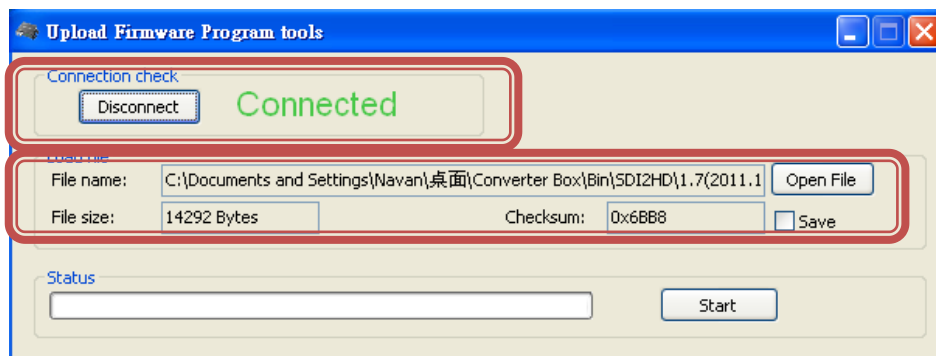
Step 2.

Plug and un-plug “DC adapter” to power on/off the converter box (the connection check status will be changed to “Connect”)



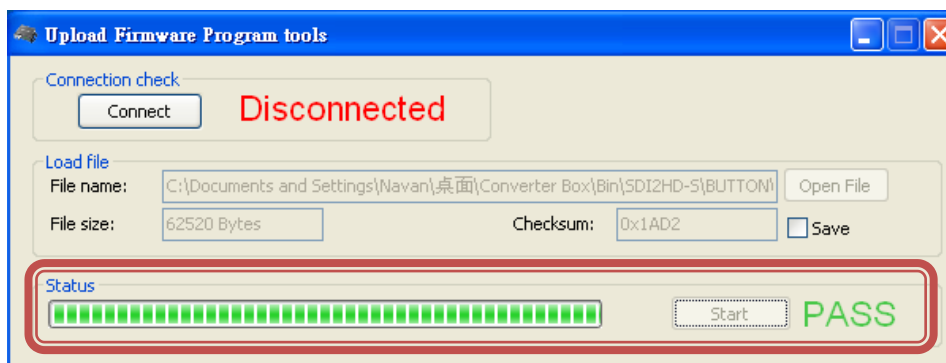
Step 3.

Plug and un-plug “DC adapter” again (the connection check status will be changed to “Connected”) and Please click the Open File button to select the firmware bin file.



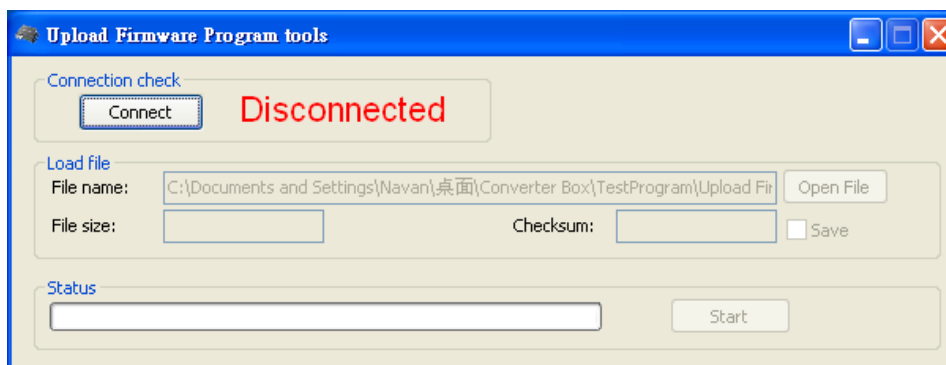
Step 4.

Please click “Start’ Button to proceed with new firmware programming. The PASS message will appear when the procedures finished.



Step 5.

Close Upload Firmware Program tools



Update List

Data	Version	Command
2013.03.14	V1.0	1. Modify Cable Equalization