

SDI2MULTI BOX

User Manual



Content

Feature	3
Front Panel.....	4
Rear Panel.....	4
Top Panel.....	5
Side Panel	5
Button/LED Indicate	6
Installation	16
Package Contents	16
Specifications.....	17
Firmware Upload.....	18
Update List.....	20
Appendix Table A	21

Feature

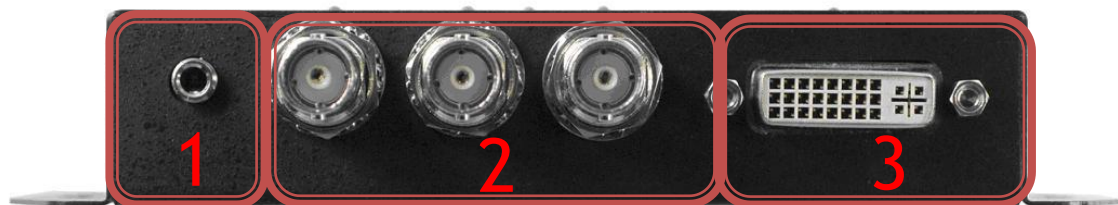
- SDI Supports HD formats :
 - 720p50 & 60
 - 1080i50 & 60
 - 1080p24, 25, 30, 50 & 60
- SDI Support 525i & 625i SD D1 format
- Auto 3G/HD/SD-SDI detection
- Can be split one 3G-SDI displays simultaneously.
- Frame rate conversion(1.000/1.001)
- External Button Configuration
- Firmware is upgradable in the field using the integrated USB port
- The converter is Plug-and-Play
- Support DVI-D, DVI-A, Component, CVBS and S-Video output

Front Panel



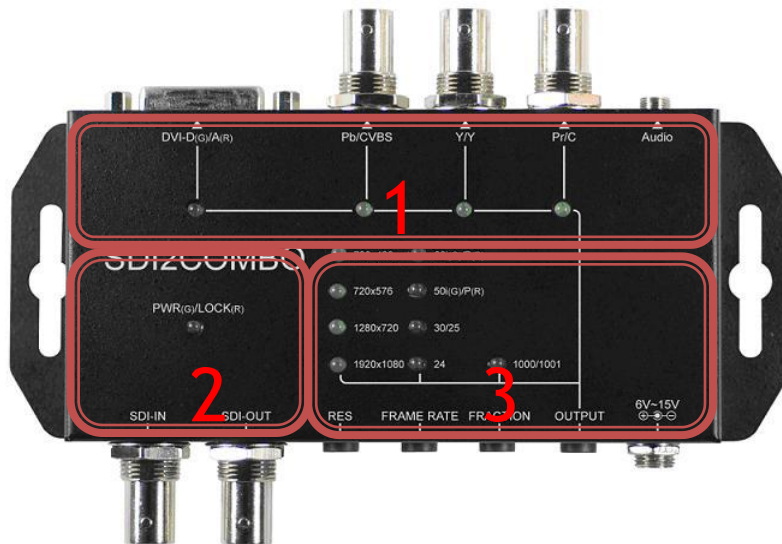
NO	Component	Function
1	SDI Input Port	From your SDI Source plug into these ports
2	SDI Output Port	From your SDI Display Device plug into this ports
3	Mode Buttons	Select Format/Output Port
4	Power Jack	The Power adapter plug into here

Rear Panel



NO	Component	Function
1	Phone Jack	Form you Audio Device plug into this port
2	Component/CVBS/S-Video Output Port	From your YPbPr/CVBS/S-Video Device plug into this port
3	DVI-D/DVI-A Output Port	From your DVI-D/DIV-A Device plug into this port

Top Panel



NO	Component	Function
1	Output Source LED	The LEDs are indicate main output of source
2	Power and Lock LED	The LEDs is indicate power and signal locked.
3	Main Format LED	The LEDS are indicate main output of format

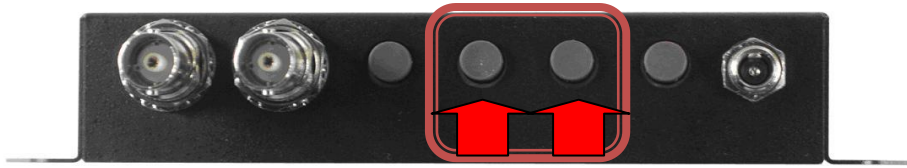
Side Panel



NO	Component	Function
1	USB Port	Upgrade firmware/Control Box From PC

Button/LED Indicate

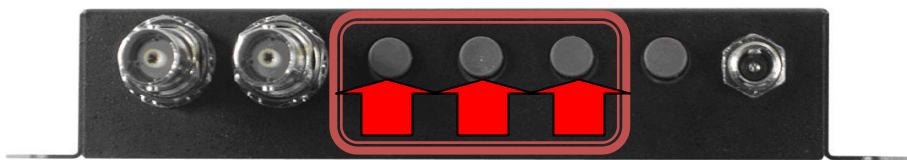
1. Firmware Mode:



Hold on the 3 and 2 button, the display is showed firmware version on display of left upper.

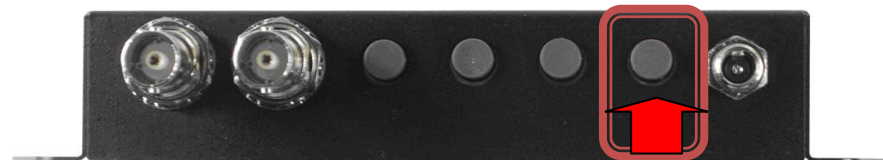
FIRMWARE VERSION
0.1.0.1

2. Default Mode:



Pull all button (1, 2 and 3) at same time, the box auto reset to default.

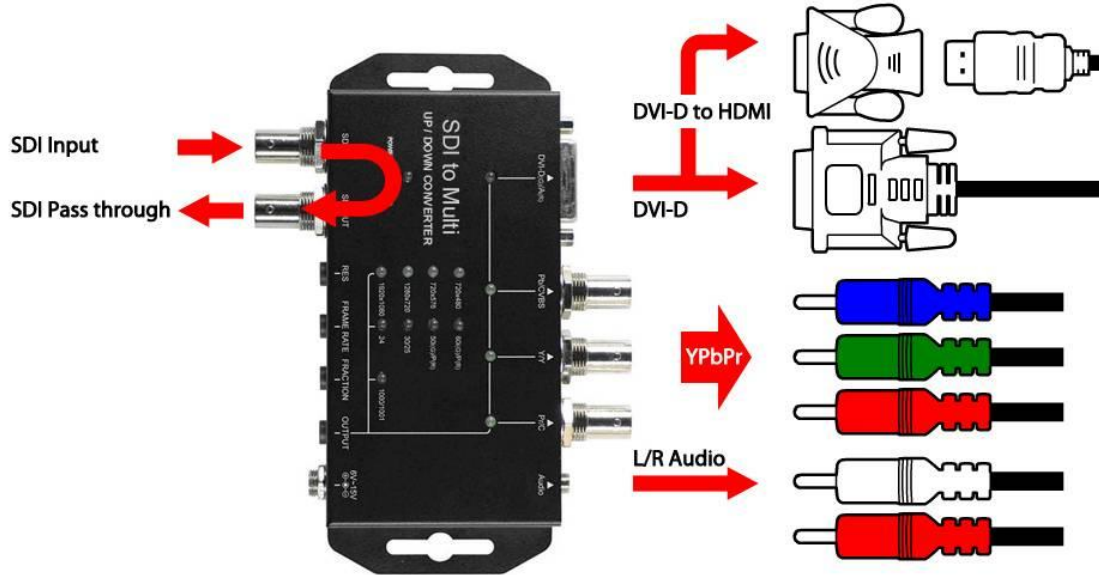
3. Output Source Mode:



Pull button 4 change to output source mode. The button 3 and 4 can be switch output source.

	DVI-D/DVI-A	Pb/CVBS	Y/Y	Pr/C
DVI-D	●	○	○	○
DVI-A	●	○	○	○
YPbPr	○	●	●	●
CVBS/YC	○	●	●	●

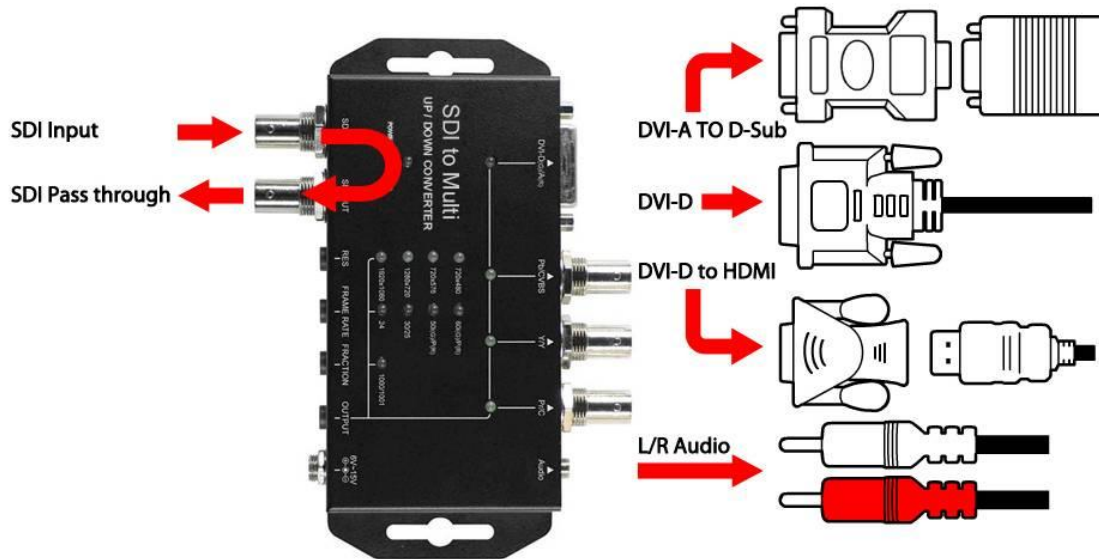
a. DVI-D Output: (DVI-D + YPbPr)



Pull button 1 change to format mode, frame rate and Fraction by button 2 and 3.

Button 1	Button 2	Button 3
720x480	60i	59.94i
	60p	59.94p
720x576	50i	
	50p	
1280x720	60p	59.94p
	50p	
1920x1080	60i	59.94i
	50i	
	60p	59.94p
	30p	29.97p
	25p	
	24p	23.98p

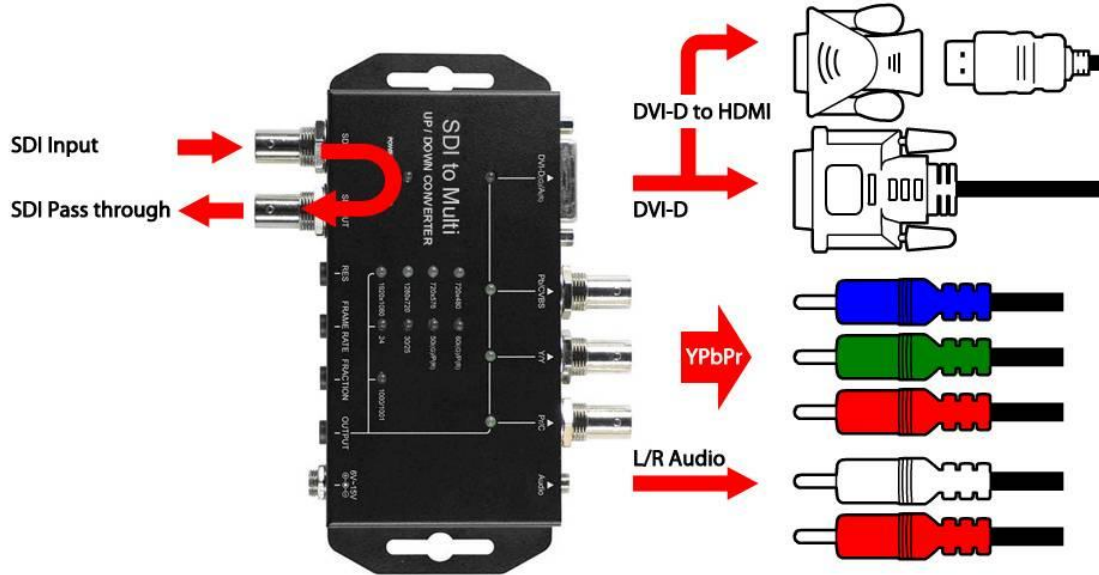
b. DVI-A Output: (DVI-D + DVI-A)



Pull button 1 change to format mode, button 1 and 2 is change format

Button 1	Format	Button 2
	1920x1080 p60	
	1680x1050 p60	
	1600x1200 p60	
	1440x900 p60	
	1400x1050 p60	
	1366x768 p60	
	1280x1024 p60	
	1024x768 p60	
	800x600 p60	

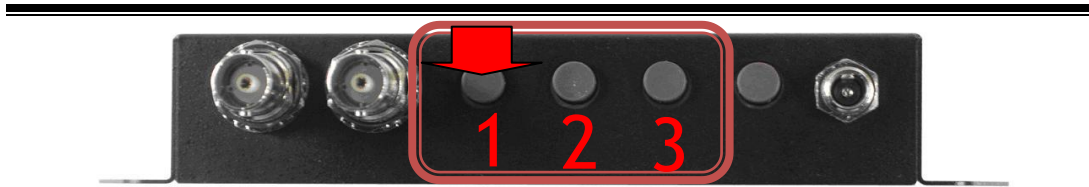
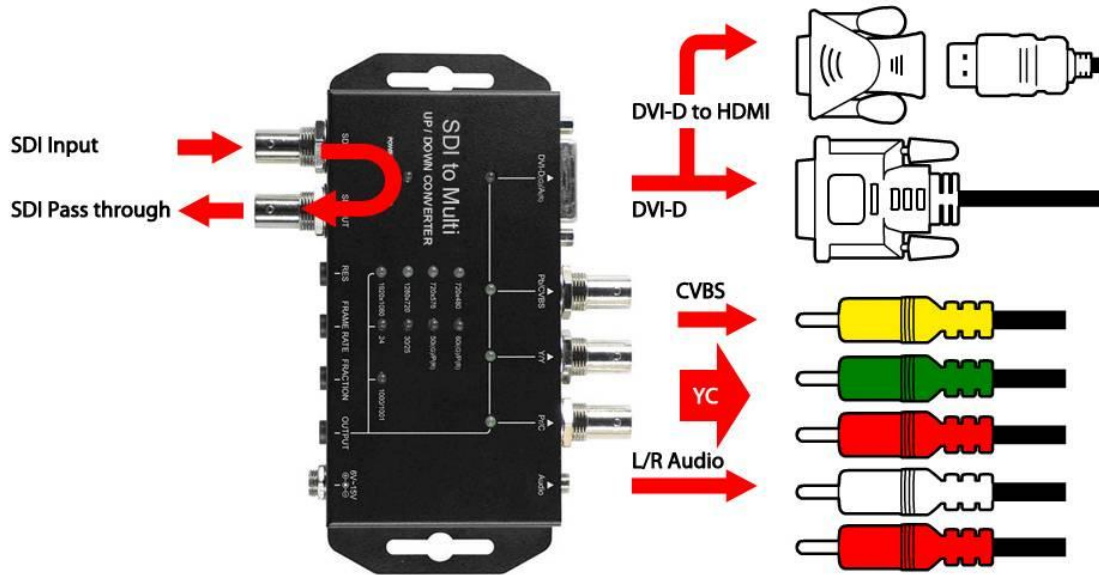
c. YPbPr Output : (YPbPr + DVI-D)



Pull button 1 change to format mode, frame rate and Fraction by button 2 and 3.

Button 1	Button 2	Button 3
720x480	60i	59.94i
	60p	59.94p
720x576	50i	
	50p	
1280x720	60p	59.94p
	50p	
1920x1080	60i	59.94i
	50i	
	60p	59.94p
	30p	29.97p
	25p	
	24p	23.98p

d. CVBS/S-VIDEO Output :



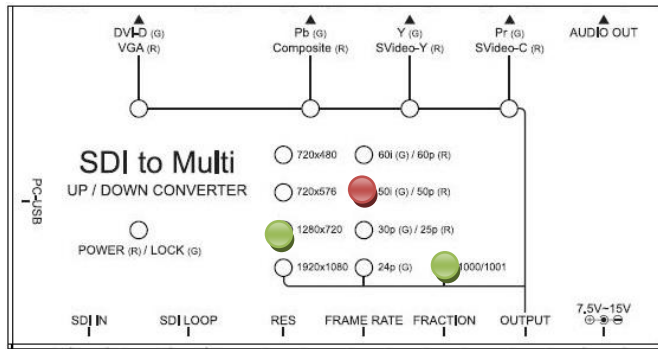
Pull button 1 change to format mode, frame rate and Fraction by button 2 and 3.

Button 1	Button 2	Button 3	CVBS/SVIDEO
720x480	60i	59.94i	NTSC
	60p	59.94p	
720x576	50i		PAL
	50p		
1280x720	60p	59.94p	NTSC
	50p		PAL
1920x1080	60i	59.94i	NTSC
	50i		PAL
	60p	59.94p	NTSC
	30p	29.97p	NTSC
	25p		PAL
	24p	23.98p	NTSC

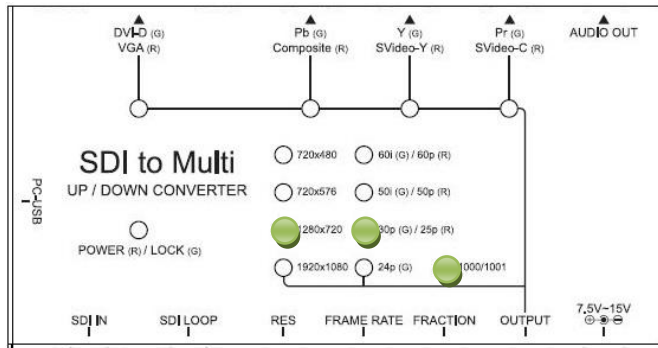
a. LED indicator:

<p>720x480 59.94i</p>	
<p>720x576 i50</p>	
<p>1280x720 p60</p>	
<p>12080 x720 p59</p>	

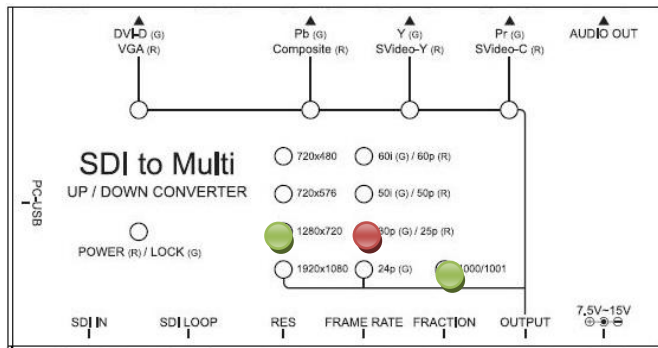
1280x720 p50



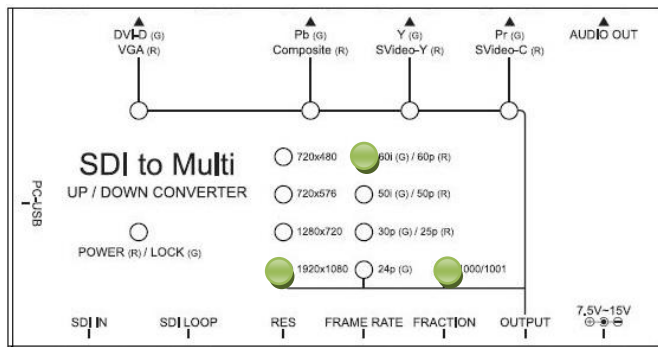
1280x720 p30



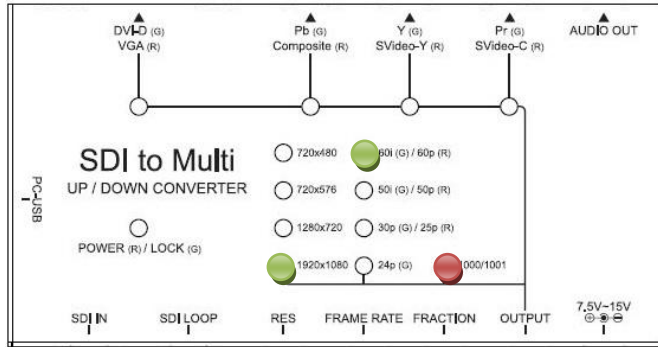
1280x 720 p25



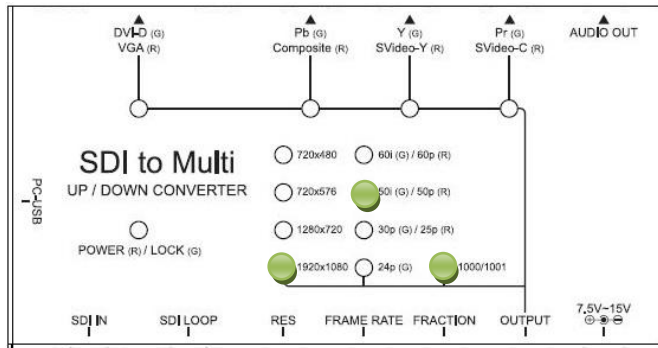
1920x1080 i60



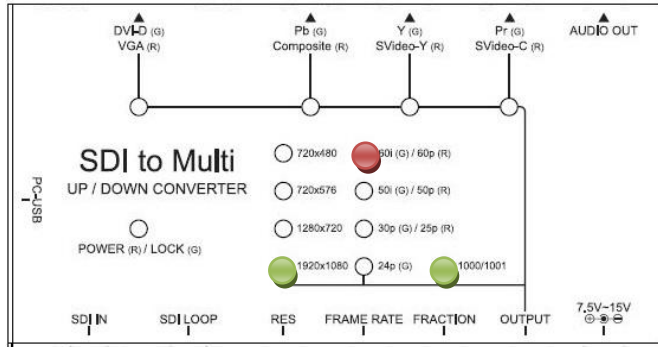
1920x1080 i59



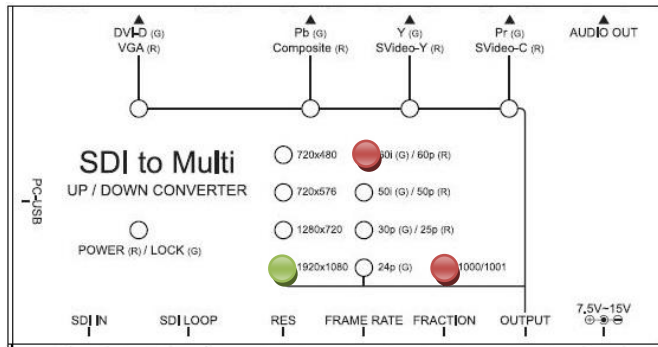
1920x1080 i50



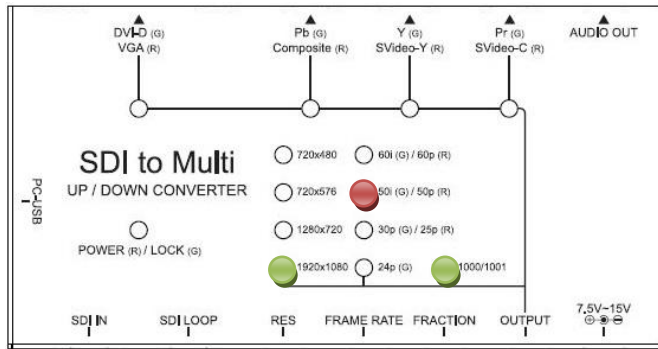
1920x1080 p60



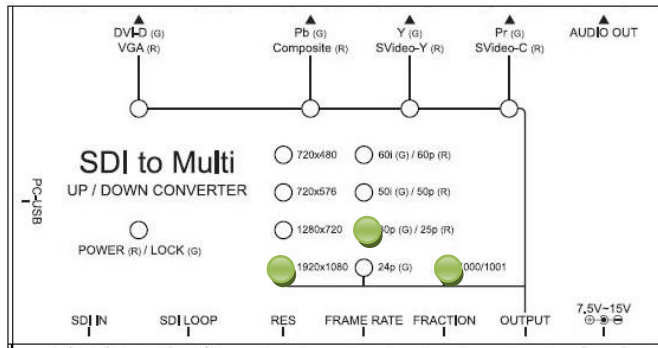
1920x1080 p59



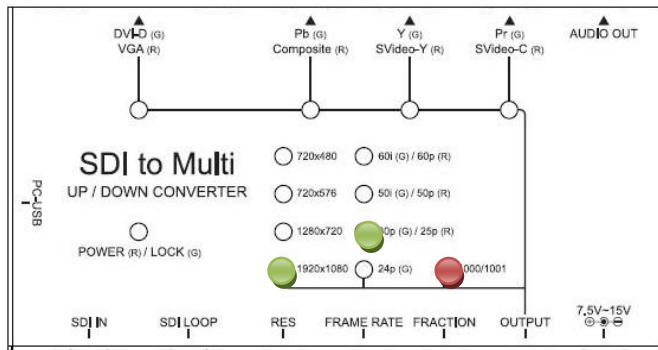
1920x1080 p50



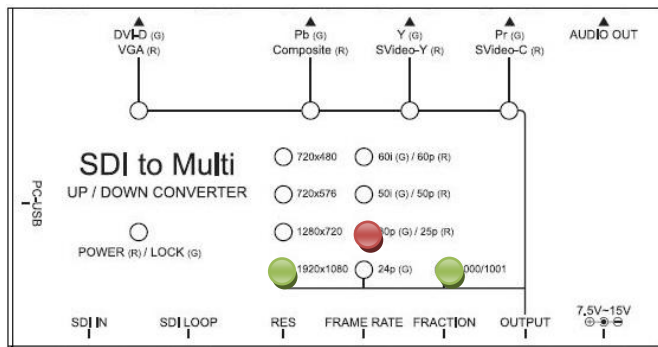
1920x1080 p30



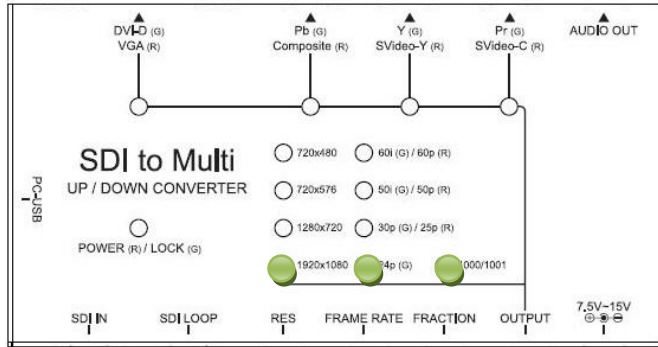
1920x1080 p29



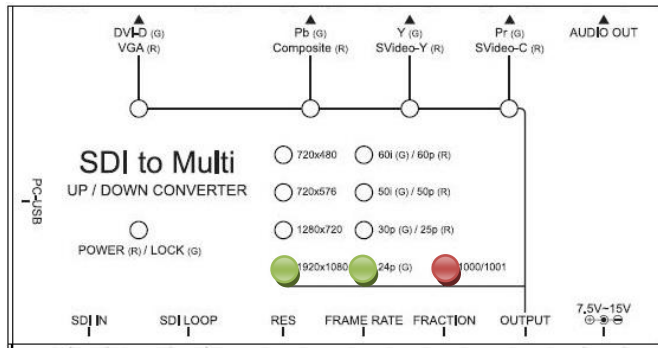
1920x1080 p25



1920x1080 p24



1920x1080 p23



Installation

SDI2MULTI installation consists of the following:

1. Disconnect +12DC adaptor to converter.
2. Connect Video Source (SDI) to the SDI Connector.
3. Connect Equipment to the output's connector
4. Connect the +12DC adaptor to the converter.

Package Contents

The SDI2MULTI package contains the following items:

- User Manual x 1
- +12 DC Adapter x 1
- SDI2MULTI Converter x 1

Specifications

DESCRIPTION	
SDI Format	SD-SDI, HD-SDI & 3G-SDI
SDI Transition Rate	2.970Gb/s, 10485Gb/s and 270Mb/s
Audio Support	Stereo 2-Channel (L/R Audio)
Coaxial Cable Type	RG6/RG59(75Ω)
Cable Equalization	3G: 100m of RG6/ 86m of RG59 HD: 170m of RG6/ 120m of RG59 SD: 400m of RG6/ 280m of RG59 *1 RG6: CANARE L-5CFB Cable / RG59: Belden 9275 Cable *2 Cable Length Performance: Depending on SDI Signal and Cable Quality
Input Format Support	Appendix Table A
Output Format Support	Appendix Table A
Firmware Updates	Via Mini-USB
Input	1 x BNC [SDI]
Output	1 x BNC [SDI] 1 x DVI-I [DVI-D + DVI-A] 3 x BNC [YPbPr or YC + CVBS] 1 x Phone Jack
BNC Connector	3G 75 Ω inter-locked socket
USB Connector	Mini-USB
Bottom	Output Format/TV Wall/TV Ratio
Housing	SECC
Dimension	L:153mm x W:63.3mm xH:26mm
Power Source	Power Adapter: AC 100 ~ 240 V/DC (+6 ~ 15 V)
Operation Temperature	0~70°C [32~158°F]
Storage Temperature	-40~+128°C

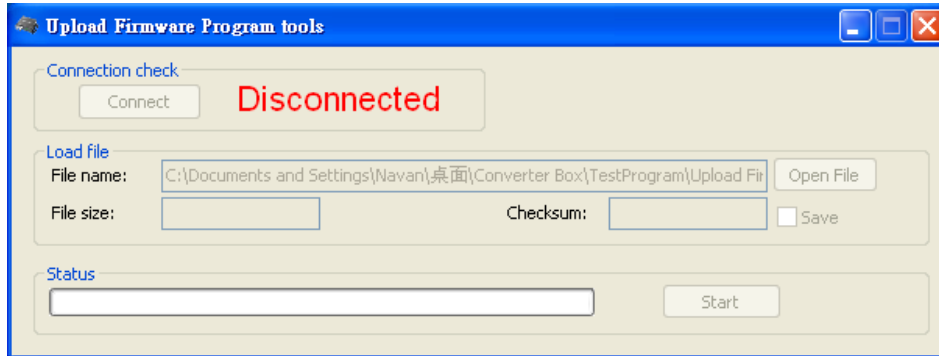
Firmware Upload

Firmware is upgradable in the field using the integrated USB port

How to Firmware upgrade:

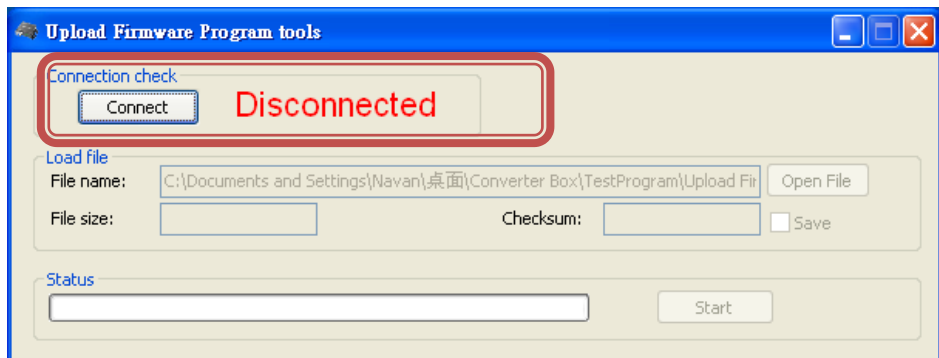
Step1.

Open Upload Firmware Program tools.exe and connect box to PC by USB Cable.



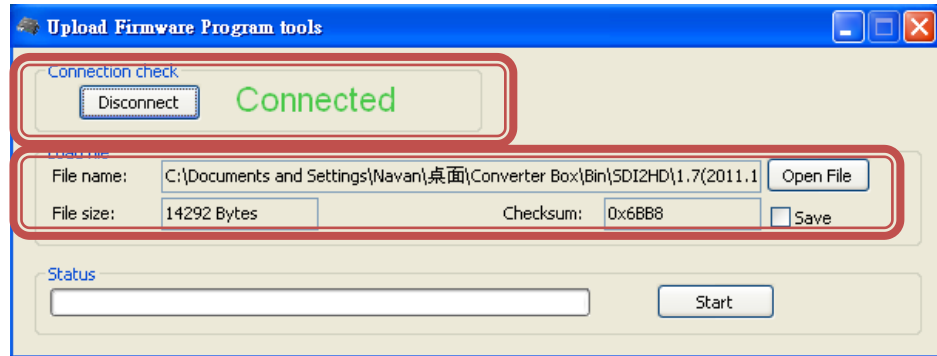
Step2.

Plug and un-plug “DC adapter” to power on/off the converter box (the connection check status will be changed to “Connect”)



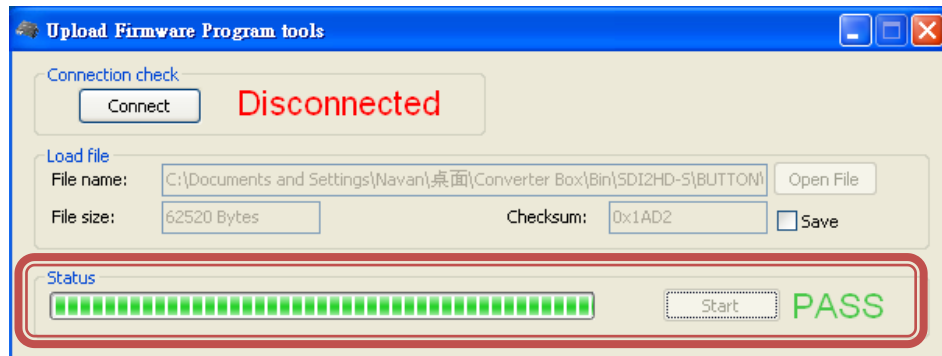
Step3.

Plug and un-plug “DC adapter” again (the connection check status will be changed to “Connected”) and Please click the Open File button to select the firmware bin file.



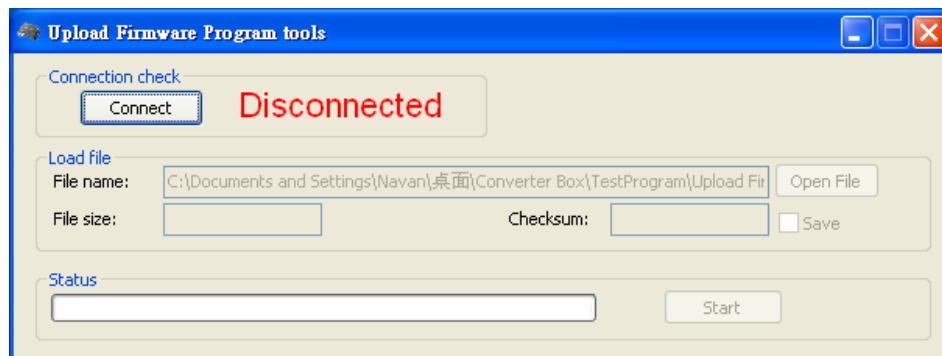
Step4.

Please click “Start’ Button to proceed with new firmware programming. The PASS message will appear when the procedures finished.



Step5.

Close Upload Firmware Program tools



Update List

Data	Version	Command
2012.11.05	V1.0	File established
2013.10.08	V1.1	1. Rename to SDI2Multi 2. Add Pattern Generator Function

Appendix Table A

Support Input Format:

SDI Mode		
720x480 i59.94	720x576 i50	
1280x720 p60	1280x720 p59.94	1280x720 p50
1920x1080 i60	1920x1080 i59.94	1920x1080 i50
1920x1080 p60	1920x1080 p59.94	1920x1080 p50
1920x1080 p30	1920x1080 p29.97	1920x1080 p25
1920 x 1080 p24	1920 x 1080 p23.98	

Support Output Format (DVI-A):

DVI-A Mode		
1920x1080 p60	1680x1050 p60	1600x1200 p60
1440x900 p60	1400x1050 p60	1366x768 p60
1280x1024 p60	1024x768 p60	800x600 p60

DVI-D/YPbPr Mode		
720x480 i60	720x480 i59.94	720x576 i50
720x480 p60	720x480 p59.94	720x576 p50
1280x720 p60	1280x720 p59.94	1280x720 p50
1920x1080 i60	1920x1080 i59.94	1920x1080 i50
1920x1080 p60	1920x1080 p59.94	1920x1080 p50
1920x1080 p30	1920x1080 p29.97	1920x1080 p25
1920 x 1080 p24	1920 x 1080 p23.98	